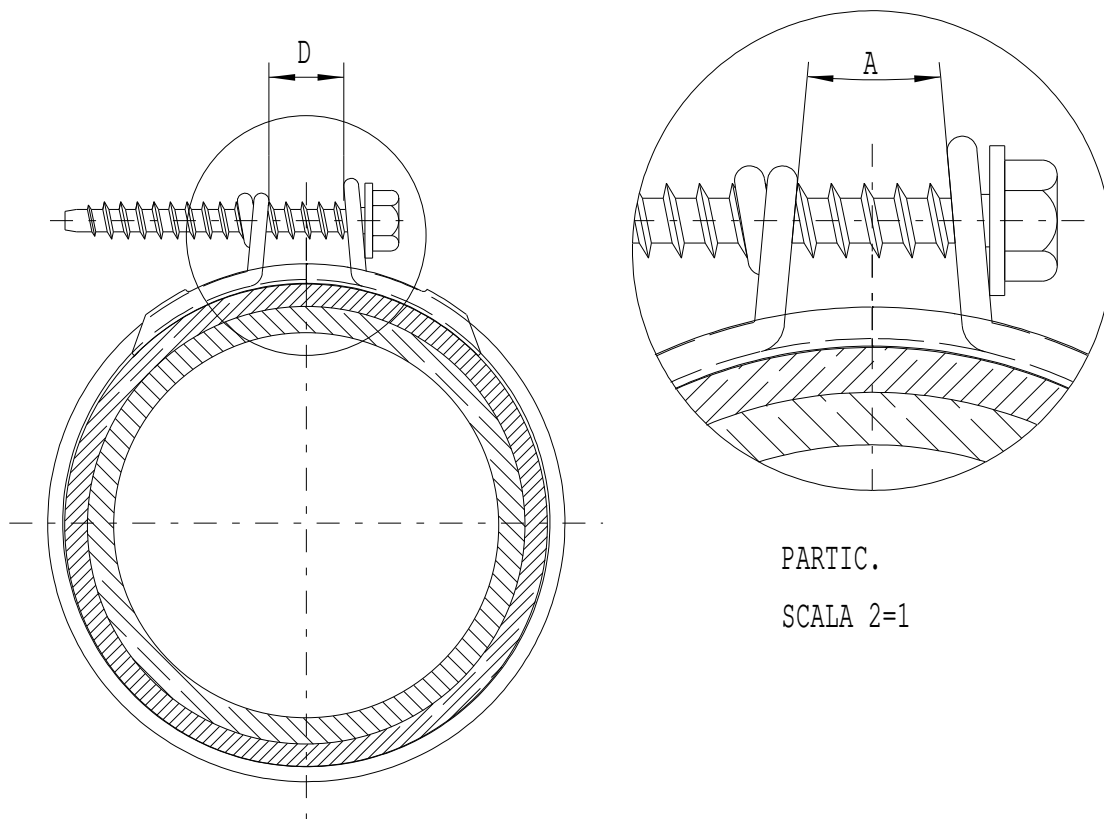


Salt spray test: 48h – UNI ISO 9227.

TECHNICAL CHARACTERISTICS

- | | | |
|----------------------------------|--------------------|---|
| 1) RING | Material: | Steel EN 10270-1-SM-2,00 Z (C72) |
| 2) PONTICELLO | Material: | DX51D +AZ 150 UNI EN 10215 (Aluzink B 500 A) |
| 3) SCREW exagon screwdriver head | Material: | Steel C21 B KB UNI 7356 hardened and tempered |
| | Surface treatment: | Trivalent galvanising Fe/Zn 5 II |

MODEL	ASSEMBLING D Max. (mm.)	TIGHTENING D Min. (mm.)	SCREW (mm.)	Tightening couple MAX. (N/m)	BOX QUANTITY
FM- 4942	49	42	L= 40	2	1200
FM- 5547	55	47	L= 40		1000
FM- 6557	65	57	L= 40		700
FM- 6960	69	60	L= 40		700
FM- 7264	72	64	L= 45		700
FM- 7768	77	68	L= 45		600
FM- 7971	79	71	L= 40		600
FM- 8274	82	74	L= 45		500
FM- 8578	85	78	L= 45		500
FM- 8981	89	81	L= 45		500
FM- 10193	101	93	L= 45		800
FM- 10395	103	95	L= 45		800
FM- 108102	108	102	L= 45		800
FM- 137129	137	129	L= 45		800

TECHNICAL INFORMATION

PARTIC.

SCALA 2=1

FASCETTA MONTATA

After the assembling the clamp must be whit a distance between the hooks as draw D and whit a converging inclination see draw A, that to guarantee the elasticity and constant tension by the year. We suggest for automatic screw driver a locking force between 1,3 and 1,5 N/m that to never crash the clamp and assure a perfect clamping on the hose.